



Tomis Trophy
55nd edition, 13th– 15th of May 2016
Romanian Royal Yacht Club
Black Sea – Eforie Nord - Marina Eforie



SAILING INSTRUCTIONS

TOMIS TROPHY

13-15.05.2016 Eforie Nord, ROMANIA

Organiser: Romanian Royal Yacht Club

with the kind support of Marina Eforie

Sponsors

Banca Transilvania

Turkish Airlines

Aqua Carpatica

Ülker

Piramida Forte



ORGANISING AUTHORITY

The 55th edition Tomis Trophy is organized by the Romanian Royal Yacht Club.

1 RULES

- 1.1 The regatta will be governed by the rules as defined in *The Racing Rules of Sailing 2013-2016*.
- 1.2 No national prescriptions will apply.
- 1.3 If there is a conflict between languages the English text will take precedence.

2 NOTICES TO COMPETITORS

Notices to competitors will be posted on the official notice board located at *Marina Eforie*.

3 CHANGES TO SAILING INSTRUCTIONS

Any change to the sailing instructions will be posted before 0830 on the day it will take effect, except that any change to the schedule of races will be posted by 2000 on the day before it will take effect.

4 SIGNALS MADE ASHORE

4.1 Signals made ashore will be displayed at *Marina Eforie*.

4.2 When flag AP is displayed ashore, '1 minute' is replaced with 'not less than 45 minutes' in the race signal AP.

4.3 When flag Y is displayed ashore, rule 40 applies at all times while afloat. This changes the Part 4 preamble.



5 SCHEDULE OF RACES

5.1 Program:



Date	Time	Activities
13.05.2016	16:00 – 22:00	Arrival and Registration
14.05.2013	10:55	First possible warning signal; 4 races scheduled
15.05.2013	10:25 16:30	First possible warning signal; 3 races scheduled Prize Giving Ceremony

5.2 On the last day of the regatta no warning signal will be made after 14:30.

6 CLASS FLAGS

Class flags will be:

Class	Flag	Flag Image
Optimist	White Flag with blue Optimist logo	
Zoom8	White Flag with red Zoom8 logo	
Laser 4.7	4.7 written in blue on white	

Laser Radial	Yellow Flag with red Laser logo	
Laser Standard	White Flag with red Laser logo	

7 RACING AREAS

Attachment A shows the location of racing areas, location, boat parking and launching area.

8 THE COURSES

- 8.1 The diagrams in Attachment B show the courses, including the approximate angles between legs, the order in which marks are to be passed, and the side on which each mark is to be on the left.
- 8.2 No later than the warning signal, the race committee signal boat will display the approximate compass bearing of the first leg. Failure to signal the bearing will not be grounds for request for redress.

9 MARKS

- 9.1 Marks are described in Attachment B.
- 9.5 A race committee boat signaling a change of a leg of the course is a mark as provided in instruction 11.2.

10 THE START

- 10.1 Races will be started by using rule 26.
- 10.2 If flag U has been displayed as the preparatory signal, no part of the boat's hull, crew or equipment shall be in the triangle formed by the ends of the starting line and the first mark during the last minute before her starting signal. If a boat breaks this rule and is identified, she shall be disqualified without a hearing but not if the race is re-started, re-sailed, postponed or abandoned before the starting signal. This changes RRS 26 Starting Races. When flag U is used as the preparatory signal RRS 29.1 Individual recall does not apply. The scoring abbreviation for a flag U penalty is UFD. This changes A11 Scoring Abbreviations.
- 10.3 To alert boats that a race or sequence of races will begin soon, the orange starting line flag will be displayed with one sound at least five minutes before a warning signal is made.
- 10.4 The starting line will be between a staff displaying an orange flag on the Race Committee Signals Boat at the starboard end and the course side of the port-end starting mark.
- 10.5 Boats whose warning signal has not been made shall avoid the starting area during the starting sequence for other races.
- 10.6 A boat starting later than 4 minutes after her starting signal will be scored Did Not Start without a hearing. This changes rule A4.
- 10.7 The starting sequence is:
 - Laser STD
 - Laser RDL
 - Laser 4.7
 - Zoom8

- Optimist

- 10.8 After the first race of a day, the Race Committee may change the starting sequence.
- 10.9 The start of 2 (two) or more classes can be combined, for instance Laser 4.7 and Zoom8. In case of combining classes, the class flags will be hoisted together.

11 CHANGE OF THE NEXT LEG OF THE COURSE

- 11.1 To change the next leg of the course, the race committee will lay a new mark (or move the finishing line) and remove the original mark as soon as practicable.
- 11.2 Boats shall pass between the race committee boat signaling the change of the next leg and the nearby mark, leaving the mark to port and the race committee boat to starboard. This change rule 28.

12 THE FINISH

- 12.1 The finishing line will be between a staff displaying an orange flag on the finishing mark at the starboard end and the course side of the port-end finishing mark
- 12.2 If the race committee is absent when a boat finishes, she should report her finishing time, and her position in relation to nearby boats, to the race committee at the first reasonable opportunity.

13 PENALTY SYSTEM

Appendix P will apply.

14 TIME LIMITS AND TARGET TIMES

- 14.1 Target time is 50 minutes. Failure to meet the target time will not be grounds for redress. This change rule 62.1(a).
- 14.2 Boats failing to finish within 15 minutes after the first boat sails the course and finishes will be scored Did Not Finish without a hearing. This changes rules 35, A4 and A5.

15 PROTESTS AND REQUESTS FOR REDRESS

- 15.1 Immediately after finishing, a boat that intends to lodge a protest will inform the Race Committee boat at the finishing line about the boat/boats she intends to protest until her intention is recognized by the Race Committee. (Addition to RRS rule 61.1(a)).
- 15.2 Protest forms are available at the race office, located at Eforie Marina. Protests and requests for redress or reopening shall be delivered there within the appropriate time limit.
- 15.3 For each class, the protest time limit is 60 minutes after the last boat has finished the last race of the day or the race committee signals no more racing today, whichever is later.
- 15.4 Notices will be posted no later than 30 minutes after the protest time limit to inform competitors of hearings in which they are parties or named as witnesses. Hearings will be held in the protest room, located at Eforie Marina.
- 15.5 Notices of protests by the race committee or protest committee will be posted to inform boats under rule 61.1(b).
- 15.5 A list of boats that, under instruction 13, have been penalized for breaking rule 42 will be posted.
- 15.6 Breaches of instructions 17, 20, 22, 23, 24, 25 and 26 will not be grounds for a protest by a boat. This change rule 60.1(a). Penalties for these breaches may be less than disqualification if the protest committee so decides.
- 15.7 On the last scheduled day of racing a request for reopening a hearing shall be delivered



Tomis Trophy
55nd edition, 13th– 15th of May 2016
Romanian Royal Yacht Club
Black Sea – Eforie Nord - Marina Eforie



- (a) Within the protest time limit if the requesting party was informed of the decision on the previous day;
- (b) No later than 30 minutes after the requesting party was informed of the decision on that day.

This change rule 66.

- 15.8 On the last scheduled day of racing a request for redress based on a protest committee decision shall be delivered no later than 30 minutes after the decision was posted. This change rule 62.2.
- 15.9 Decisions of the Protest Committee will be final as provided in rule 70.5.

16 SCORING

- 16.1 7 (seven) races are scheduled of which 1 race is required to be completed to validate the regatta.
- 16.2 (a) When 4 races or fewer than 4 races have been completed score will be the total of her race scores.
- (b) When from 5 to 7 races have been completed, a boat's score will be the total of her race scores excluding her worst score.

17 SAFETY REGULATIONS

- 17.1 A "sign on / sign off" procedure will be established. Each race day one member of each crew shall sign personally a list available at the Race Office before going on the race area and as soon as possible after coming back ashore. The signature of a representative is invalid. The list to "sign on" will be open from two hours before the first scheduled warning signal up to the starting signal of the first race of the day. The list to "sign off" will be open up to the time limit for lodging protest of the respective day. However, when the Race Committee asks competitors to wait ashore for further signals between two races and then decides effectively to start a new race, the list to "sign off" will be open only up to the time the flag AP is lowered ashore. Then a new list to "sign on" will be open from that time up to the starting signal of the new race and a new list to "sign off" will be open up to the time limit for lodging protests of the respective day.

Any boat not complying with this instruction without any reason beyond her control will be subject of a protest committee hearing.

- 17.2 A boat that retires from a race (except circumstances outside her control) shall notify the Race Committee as soon as possible and shall also fill in the relevant form available at the Race Office within the protest time limit of the respective day.

- 17.3 When flag W, with a long sound signal, is displayed on a committee boat all support boats are requested to remain afloat and assist all sailors.



18 REPLACEMENT OF CREW OR EQUIPMENT

- 18.1 Substitution of competitors will not be allowed without prior written approval of the protest committee.
- 18.2 Substitution of damaged equipment may be permitted providing that the relevant form has been filled in at the Race Office, the damaged equipment has been checked by the Race Committee and the substituting equipment has been inspected.

- 18.3 If the substitution was made on the water between races, both the damaged and the substituting pieces of equipment shall be presented to the Race Committee after the end of the day's racing. In this case, the substitution is subject to the approval of the Race Committee given retrospectively.

19 EQUIPMENT AND MEASUREMENT CHECKS

A boat or equipment may be inspected at any time for compliance with the class rules and sailing instructions.

20 EVENT ADVERTISING

Boats shall display event advertising signs positioned according to the instructions given by the organizing authority,

21 OFFICIAL BOATS

Official boats will be marked as follows:

Race Committee	White flag marked with blue 'RC'
Jury Boat	Red flag marked 'JURY' with white letters
Media Boat	White flag marked with black 'MEDIA'

22 SUPPORT BOATS

- 22.1 Except when requested to participate in rescue operations, team leaders, coaches, parents and other support personnel shall stay outside areas where boats are racing and are restricted to a 5 knot speed limit, from the time of the preparatory signal for the first fleet of a race to start until all boats have finished or the Race Committee signals a postponement or abandonment of all fleets. The areas the boats are racing in is defined as the area inside the course and within 100 meters of any mark, lay line, starting line, finishing line or any area where any boat that is racing is sailing or may sail. Attachment B assists the interpretation of this exclusion area. During any starting sequence, support boats in the vicinity of the start line, shall stay at least 50 meters below the starting line and its extensions.
- 22.2 When a Race Committee or Protest Committee member indicates a support boat to move further from the course area, the mentioned boat shall do so immediately.
- 22.3 The Protest Committee or the Race Committee may instruct one or more support boats to maintain station in areas which are at variation from instruction 22.1.
- 22.4 The Race Committee or the Protest Committee may protest any boat whose support boat is in breach of Sailing Instruction 22. Penalties imposed as a result of a protest under this rule will result in a penalty being imposed on the boat(s) supported by the support boat.

23 TRASH DISPOSAL

Trash may be placed aboard support or official boats.

24 RADIO COMMUNICATION

Except in an emergency, a boat shall neither make radio transmissions while racing nor receive radio communications not available to all boats. This restriction also applies to mobile telephones.

25 PRIZES

Prizes and cups will be awarded to every boat placing first, second and third in each group and class. For Optimist class will be awarded separately the following four groups:



Tomis Trophy
55nd edition, 13th– 15th of May 2016
Romanian Royal Yacht Club
Black Sea – Eforie Nord - Marina Eforie



Optimist Boys
Optimist Girls
Optimist junior Boys
Optimist junior Girls
The organizer may decide to award additional subclasses.
Further diplomas may be awarded to all participants.

26 DISCLAIMER OF LIABILITY

Competitors participate in the regatta entirely at their own risk. See rule 4, Decision to Race. The organizing authority will not accept any liability for material damage or personal injury or death sustained in conjunction with or prior to, during, or after the regatta.

27 INSURANCE

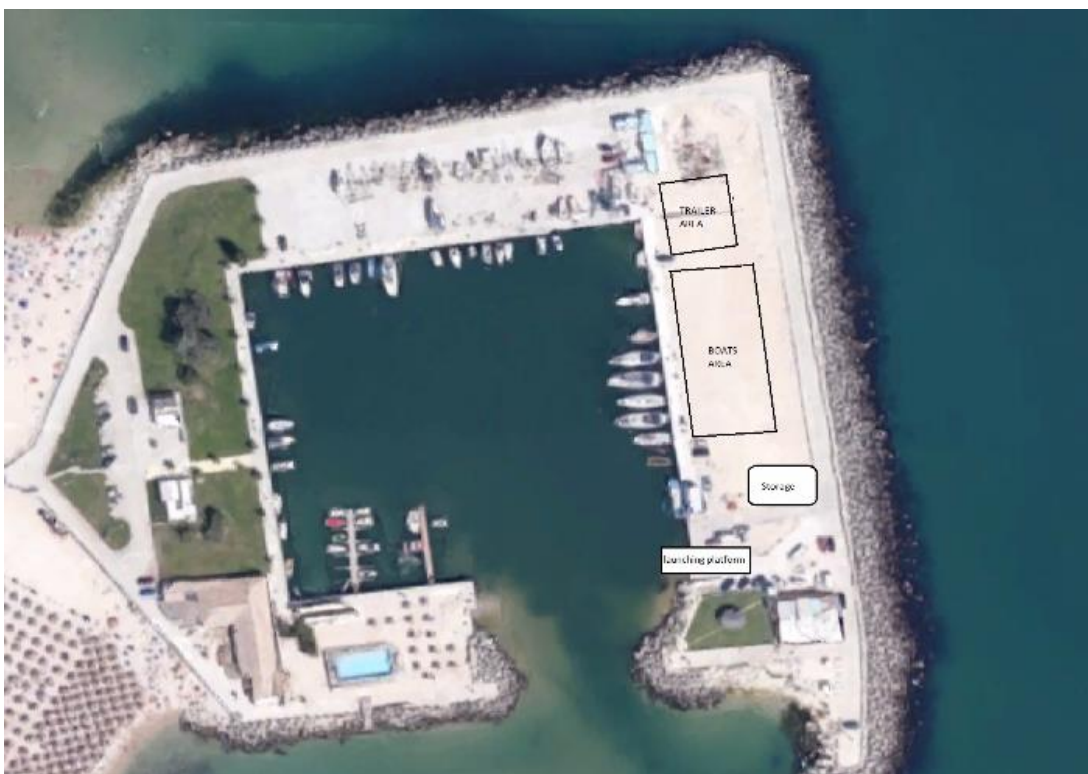
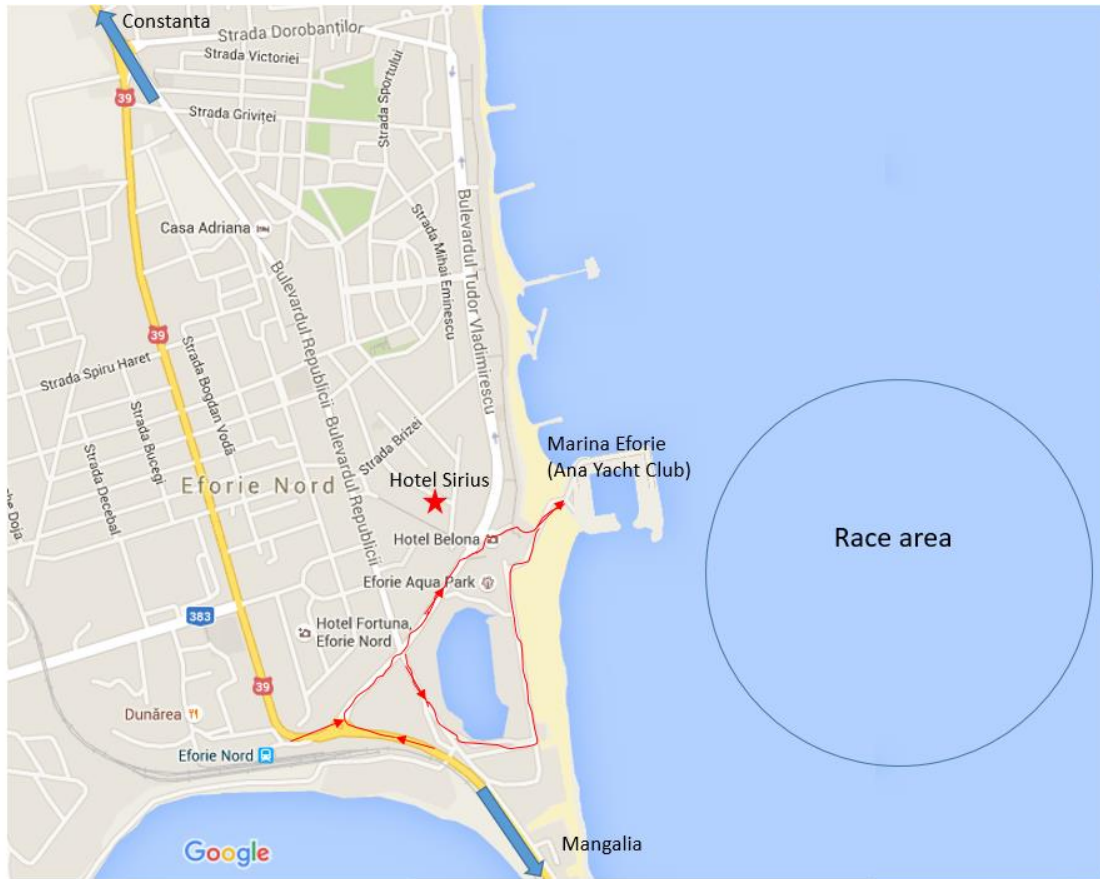
Each participating boat will be insured with valid third-party liability insurance with a minimum cover of 300.000 euro per incident or the equivalent.

Fair winds,

Principal Race Officer
Pınar Coşkuner (IRO)

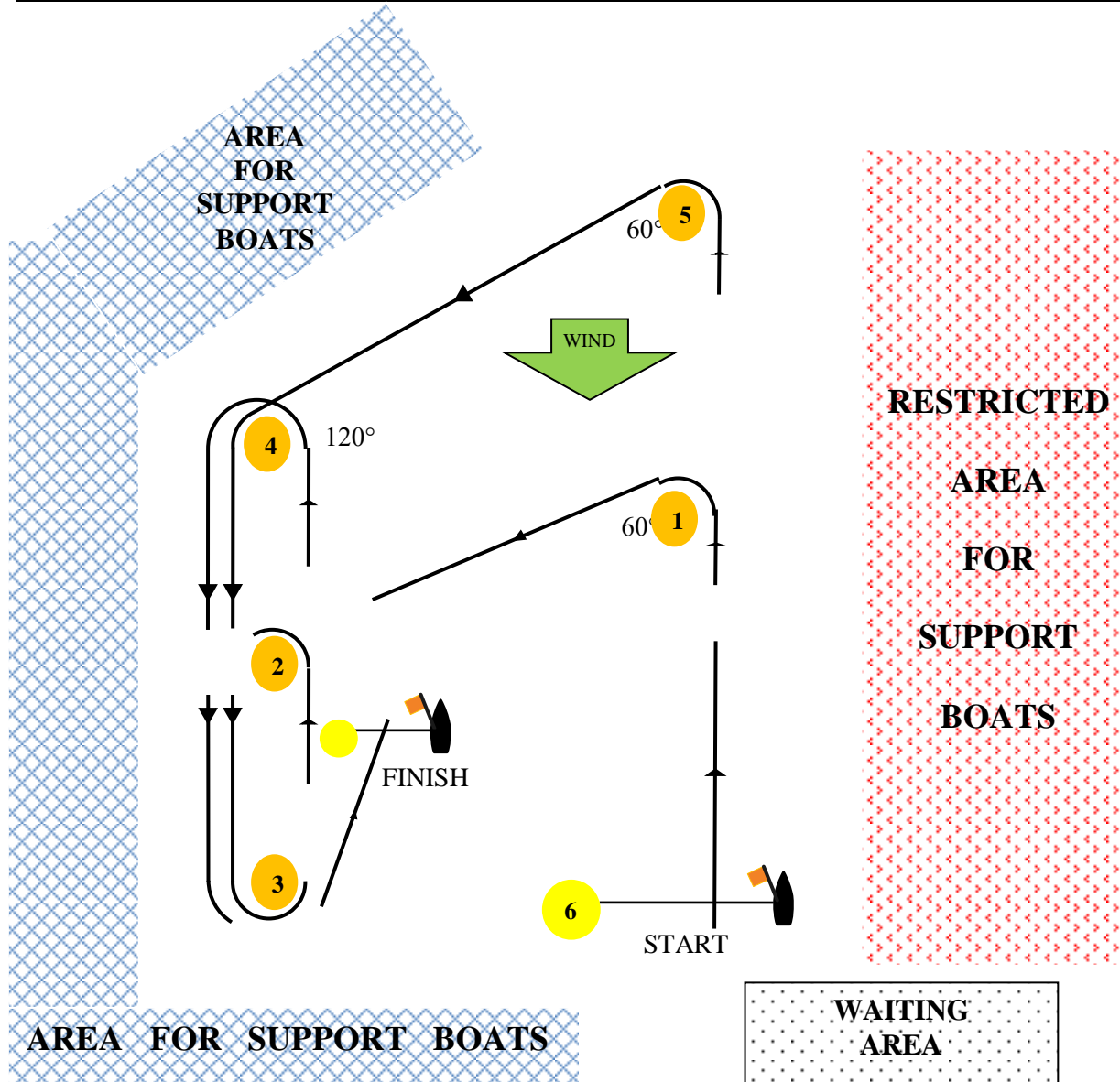
Appendix A - Racing Area

- The racing area will be Black Sea / Eforie Nord, in front of Eforie Marina, 1.5-2.0 nautical miles from the harbor.





Appendix B - THE COURSE



MARK 1,2,3, 4 and 5	orange cylindrical inflatable buoys
MARK 6	yellow cylindrical inflatable buoy
New MARK (if used)	yellow cylindrical inflatable buoy
Port-end finishing mark	yellow cylindrical inflatable buoy

Class	THE COURSE
Optimist	START – 1 – 2 – 3 – FINISH
Zoom8	START – 1 – 2 – 3 – 2 – 3 – FINISH
LASER 4.7	START – 5 – 4 – 3 – FINISH
LASER RDL	START – 5 – 4 – 3 – 2 – 3 – FINISH
LASER STD	START – 5 – 4 – 3 – 4 – 3 – FINISH